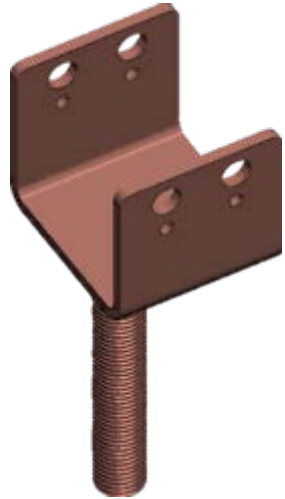
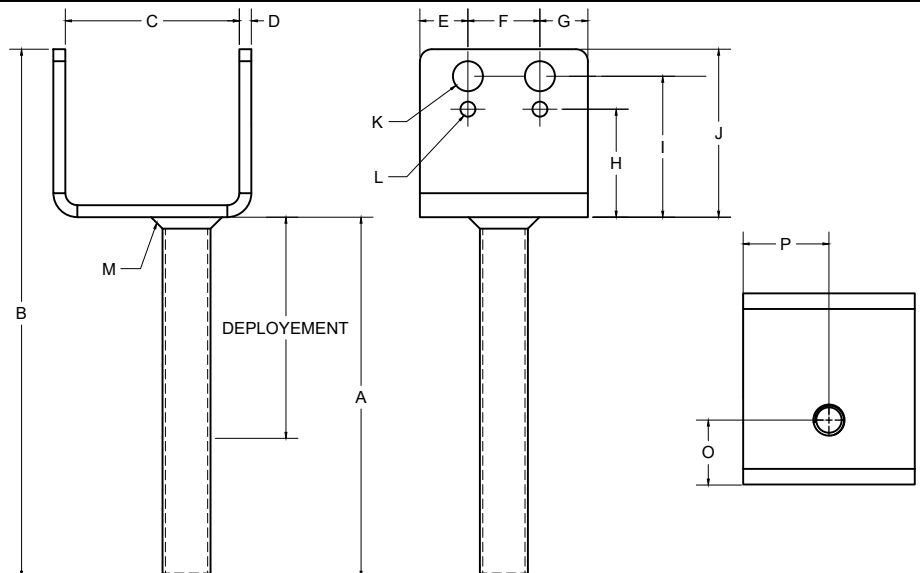


2

1



NOTES :

- 1-MATERIALS:
 -PLATE PER CSA G40.21 50W, MIN.FY=60 KSI, FU=70KSI
 -THREADED ROD F3125 GRADE A325 OR ASTM A449 TYPE 1 WITH MIN. YIELD STRENGTH OF 92 KSI AND MIN. TENSILE STRENGTH OF 120 KSI.
- 2-ANY CHANGE OF MATERIAL IS SUBJECT TO GOLIATHTECH APPROVAL
- 3-WELD PERFORMED IN ACCORDANCE WITH CSA STANDARD W47.1 AND GOLIATHTECH WELDING PROCEDURES. WELDERS ARE ALSO CERTIFIED TO THE AWS STANDARD.

B

B

MECHANICAL ASD LOAD CAPACITY

NO.	Dimension (inches)	Description	Compression (kips)		Tension (kips)	Lateral (kips)
			Deployment of Threaded Rod (inches)			
A	7 1/2		0	26.30	5.63	7.59
B	10 3/4		0.5	2.81		
C	5 5/8	Wood post	1	2.79		
D	1/4		2	2.74		
E	1		3	2.70		
F	3 1/2		4	2.66		
G	1		5	2.61		
H	2		6	2.57		
I	2 11/16		Max	2.55		
J	3					
K	5/8	Bolt 1/2"				
L	9/32	Wood screw dia. 1/4"				
M	1/4	Weld				
O	2 1/16					
p	2 3/4					

Note:
 1.The ASD capacities are based on limit states associated with mechanical steel strength of the bracket to the helical pile shaft. The member supported by the bracket must be designed by the registered design professional and must not exceed the tabulated capacities. The tabulated capacities are based on the assumptions that the supported member has a stiffness greater than bracket and is connected to the top plate using minimum of two (2) ASTM A325 through-bolts on each predrilled holes of the plate.
 2.The tabulated capacities assume the pile foundation system is sidesway braced per IBC Section 1810.2.2.
 3.Threaded rod length is the distance above the top of the adjustable connection head. Maximum threaded rod length is 6.507 inches for GTBU358.
 4.Tabulated capacities based on two (2)- 1/2-inch-diameter hex head bolts installed.
 5.Capacities for bare steel brackets are based on bare steel losing 0.036-inch (318 μm) steel thickness as indicated in Section 3.9 of AC358 for a 50-year service life.
 6.Adjustable brackets are to be used with corresponding GTBASEXXX, see GTBASEXXX drawings for details.

3		
2		
1	INITIAL RELEASE	2023-09-26
REV	MODIFICATION	DATE



GOLIATHTECH VENTURA LINE

TITLE: OFFSET U BRACKET FOR 6" BEAMS

SEAL:	DWG. NO : VGTBU6XX3OFF
	DRAWN BY: ARG
	DESIGN BY: GOLIATHTECH
	CHECK BY: CPOC
	APP BY: CPOC
OTHER NO : GTBU558-3-E-N	

FORMAT : A	REV. : 1	DATE : 2023-09-26	PAGE : 1 DE 1
SCALE : NTS			

THIS DOCUMENT CONTAINS PROPRIETARY INFORMATION AND MAY NOT BE REPRODUCED OR COPIED WITHOUT THE EXPRESS WRITTEN PERMISSION OF A DULY AUTHORIZED REPRESENTATIVE OF GOLIATHTECH INC.

A

A

2

1