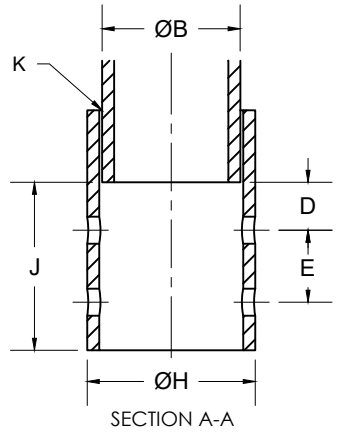
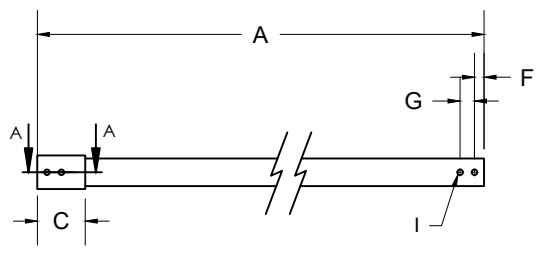


2

1



NOTES :

- 1-MATERIALS:
-TUBE PER ASTM A500 GR C, FY=60KSI, FU=70KSI
- 2-ANY CHANGE OF MATERIAL IS SUBJECT TO GOLIATHTECH APPROVAL
- 3-WELD PERFORMED IN ACCORDANCE WITH CSA STANDARD W47.1 AND GOLIATHTECH WELDING PROCEDURES. WELDERS ARE ALSO CERTIFIED TO THE AWS STANDARD.
- 4-HOT-DIP GALVANIZED, PARTS PER ASTM A123.

3		
2		
1	INITIAL RELEASE	2023-05-05
REV	MODIFICATION	DATE
REVISION		



TITLE: 3.5 Foot Extension (0.154 wall) for 2 3/8" Pile

SEAL:	DWG. NO : GTEX2383
	DRAWN BY: R.E
	DESIGN BY: GOLIATHTECH
	CHECK BY: CPOC
	APP BY: CPOC
OTHER NO : -	

FORMAT : A	REV.: 1	DATE : 2023-05-05	PAGE : 1 DE 1
SCALE : NTS			

THIS DOCUMENT CONTAINS PROPRIETARY INFORMATION AND MAY NOT BE REPRODUCED OR COPIED WITHOUT THE EXPRESS WRITTEN PERMISSION OF A DULY AUTHORIZED REPRESENTATIVE OF GOLIATHTECH INC.

MECHANICAL ASD LOAD CAPACITY

NO.	Dimension (inches)	Description	MECHANICAL ASD LOAD CAPACITY		
			Compression (kips)	Tension (kips)	Lateral (kips)
A	45 1/2		33.40	15.57	8.20
B	2 3/8				
C	5				
D	1				
E	1 1/2				
F	1				
G	1 1/2				
H	2 7/8				
I	9/16				
J	3 1/2				
K	1/4	Weld	Note: 		

2

1