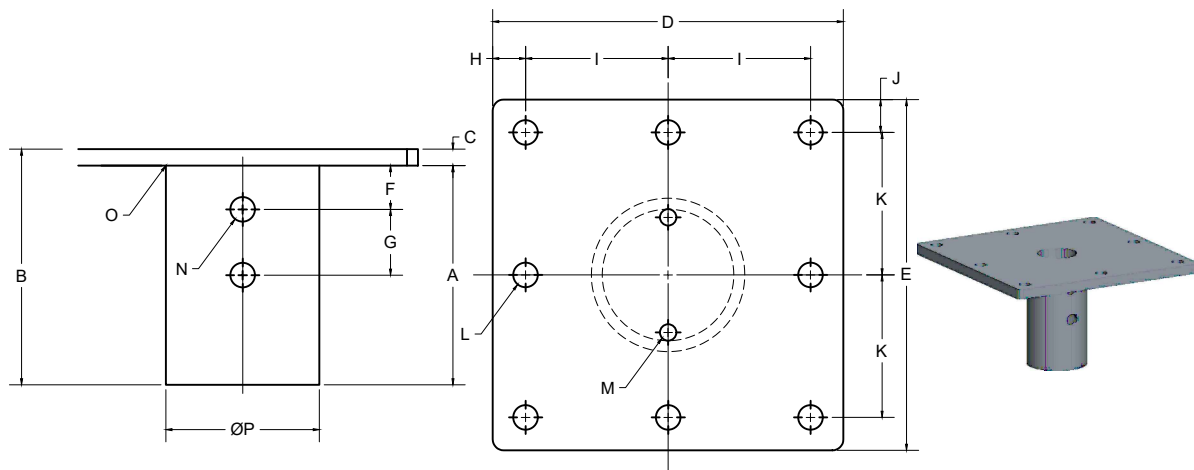


2

1

B

B



**NOTES :**

- 1-MATERIALS:  
-PLATE PER CSA G40.21 50W, MIN.FY=60 KSI, FU=70KSI  
-TUBE PER ASTM A500 GR C, FY=60KSI, ULTIMATE STRENGTH 70 KSI
- 2-ANY CHANGE OF MATERIAL IS SUBJECT TO GOLIATHTECH APPROVAL
- 3-WELD PERFORMED IN ACCORDANCE WITH CSA STANDARD W47.1 AND GOLIATHTECH WELDING PROCEDURES. WELDERS ARE ALSO CERTIFIED TO THE AWS STANDARD.
- 4-HOT-DIP GALVANIZED, PARTS PER ASTM A123.

3		
2		
1	INITIAL RELEASE	2022-10-17
REV	MODIFICATION	DATE

**REVISION**



TITLE: 8x8" (3/8" thick) Plate Fixed Structural non adjustable Head for 2 7/8" Pile

SEAL:	DWG. NO : <b>GTBRST278-8X8PL375</b>
	DRAWN BY: R.E
	DESIGN BY: GOLIATHTECH
	CHECK BY: CPOC
	APP BY: CPOC
	OTHER NO : GTBRST278LSLEEVE-8X8

FORMAT : A	REV.: <b>1</b>	DATE : <b>2022-10-17</b>	PAGE : <b>1 DE 1</b>
SCALE : NTS			

THIS DOCUMENT CONTAINS PROPRIETARY INFORMATION AND MAY NOT BE REPRODUCED OR COPIED WITHOUT THE EXPRESS WRITTEN PERMISSION OF A DULY AUTHORIZED REPRESENTATIVE OF GOLIATHTECH INC.

**MECHANICAL ASD LOAD CAPACITY SEISMIC DESIGN**

NO.	Dimension (inches)	Description	MECHANICAL ASD LOAD CAPACITY SEISMIC DESIGN					
			CATEGORIES A,B AND C			CATEGORIES D,E AND F		
			Compression (kips)	Tension (kips)	Lateral (kips)	Compression (kips)	Tension (kips)	Lateral (kips)
A	5		65.50	25.48	21.31	65.50	25.48	20.79
B	5 3/8							
C	3/8							
D	8							
E	8							
F	1							
G	1 1/2							
H	3/4							
I	3 1/4							
J	3/4							
K	3 1/4		<b>Note:</b> 1.The ASD capacities are based on limit states associated with mechanical steel strength of the bracket to the helical pile shaft. Steel column, shaft, or geotechnical capacities may control. The member supported by the bracket must be designed by the registered design professional and must not exceed the tabulated capacities. The supported member must be connected to bracket plate with a minimum of four bolts and must have a minimum thickness of at least 1.5 times the plate thickness. 2.The tabulated capacities assume the pile foundation system is sidesway braced per IBC Section 18.10.2.2. 3.Tabulated capacities based on two (2) - 1/2 - inch diameter hex head bolts. 4.All components above the bracket, including the interaction between the base plate and the bolts, and the weld between base plate and its column, are to be determined by the design professional on a job specific basis. 5.Capacities for galvanized steel brackets are based on galvanized steel losing 0.013-inch (330µm) steel thickness as indicated in Section 3.9 of AC308 for a 50-year service life.					
L	9/16							
M	3/8							
N	9/16							
O	1/4	Weld						
P	3 1/2							

A

A

2

1