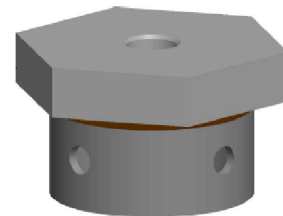
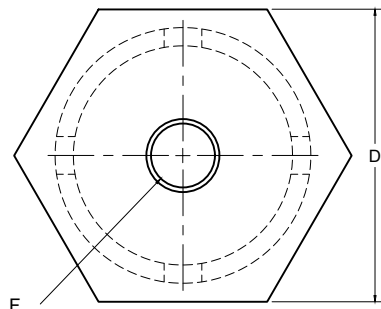
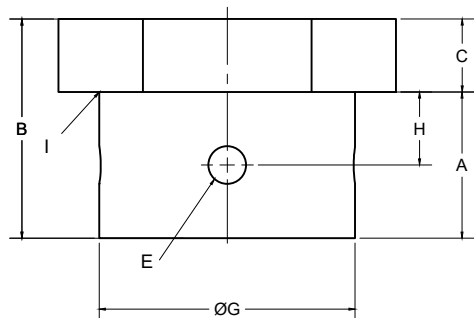


2

1

**NOTES :**

- 1-MATERIALS:  
 -PLATE PER CSA G40.21 50W, MIN.FY=60 KSI, FU=70KSI  
 -TUBES PER ASTM A500 GR C, FY=60KSI, ULTIMATE STRENGTH 70 KSI
- 2-ANY CHANGE OF MATERIAL IS SUBJECT TO GOLIATHTECH APPROVAL
- 3-WELD PERFORMED BY SHOP QUALIFIED CSA STANDARD W47.1 AND W55.3 IN ACCORDANCE WITH GOLIATHTECH WELDING PROCEDURES.
- 4-HOT-DIP GALVANIZED, PARTS PER ASTM A123.
- 5- OVERTAP PER ASTM A563.



B

B

NO.	Dimension (inches)	Description
A	2	
B	3	
C	1	
D	4	
E	9/16	
F	7/8	
G	3 1/2	
H	1	
I	1/4	Weld

**Note:**  
Useable to connect adjustable heads to piles

3		
2		
1	INITIAL RELEASE	2023-03-30
REV	MODIFICATION	DATE

REVISION



TITLE: Adjustable Hex Piles Base 2 7/8"

SEAL:	DWG. NO : <b>GTBASE278</b>
	DRAWN BY: R.E
	DESIGN BY: GOLIATHTECH
	CHECK BY: CPOC
	APP BY: CPOC
OTHER NO : -	

FORMAT : A	REV.: 1	DATE : 2023-03-30	PAGE : 1 DE 1
------------	---------	-------------------	---------------

THIS DOCUMENT CONTAINS PROPRIETARY INFORMATION AND MAY NOT BE REPRODUCED OR COPIED WITHOUT THE EXPRESS WRITTEN PERMISSION OF A DULY AUTHORIZED REPRESENTATIVE OF GOLIATHTECH INC.

2

1

A

A