

2

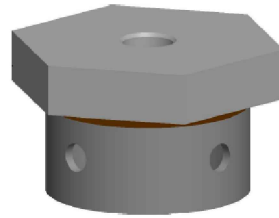
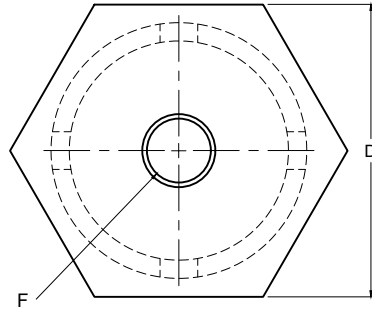
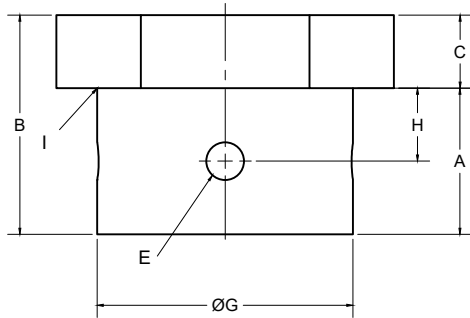
1

NOTES :

- 1-MATERIALS:
-PLATE PER CSA G40.21 50W, MIN.FY=60 KSI, FU=70KSI
-TUBES PER ASTM A500 GR C, FY=60KSI, ULTIMATE STRENGTH 70 KSI
- 2-ANY CHANGE OF MATERIAL IS SUBJECT TO GOLIATHTECH APPROVAL
- WELD PERFORMED BY SHOP QUALIFIED CSA STANDARD W47.1 AND W55.3 IN ACCORDANCE WITH GOLIATHTECH WELDING PROCEDURES.
- WELDING PER CSAW47.1 AND W55.3.
- 4-HOT-DIP GALVANIZED, PARTS PER ASTM A123.
- 5- OVERTAP PER ASTM A563.

B

B



3		
2		
1	INITIAL RELEASE	2023-03-30
REV	MODIFICATION	DATE
REVISION		



TITLE: Adjustable Hex Piles Base 2 3/8"

SEAL:	DWG. NO : GTBASE238
	DRAWN BY: R.E
	DESIGN BY: GOLIATHTECH
	CHECK BY: CPOC
	APP BY: CPOC
OTHER NO : -	

FORMAT : A	REV.: 1	DATE : 2023-03-30	PAGE : 1 DE 1
SCALE : NTS			

THIS DOCUMENT CONTAINS PROPRIETARY INFORMATION AND MAY NOT BE REPRODUCED OR COPIED WITHOUT THE EXPRESS WRITTEN PERMISSION OF A DULY AUTHORIZED REPRESENTATIVE OF GOLIATHTECH INC.

Note:
Useable to connect adjustable heads to piles

NO.	Dimension (inches)	Description
A	2	
B	3	
C	1	
D	4 1/16	
E	9/16	
F	1	
G	2 7/8	
H	1	
I	1/4	Weld

A

A

2

1