

2

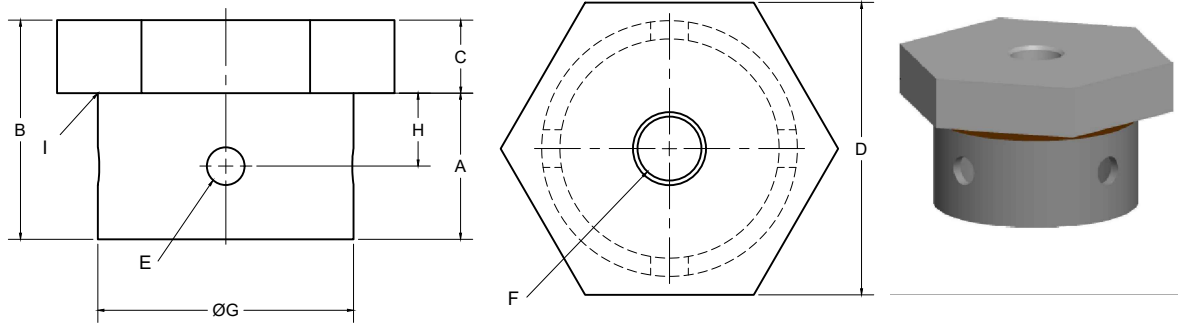
1

NOTES :

- 1-MATERIALS:
 -PLATE PER CSA G40.21 50W, MIN.FY=60 KSI, FU=70KSI
 -TUBES PER ASTM A500 GR C, FY=60KSI, ULTIMATE STRENGTH 70 KSI
- 2-ANY CHANGE OF MATERIAL IS SUBJECT TO GOLIATHTECH APPROVAL
- 3-WELD PERFORMED BY SHOP QUALIFIED CSA STANDARD W47.1 AND W55.3 IN ACCORDANCE WITH GOLIATHTECH WELDING PROCEDURES.
- 4-HOT-DIP GALVANIZED, PARTS PER ASTM A123.
- 5- OVERTAP PER ASTM A563.

B

B



| NO. | Dimension (inches) | Description |
|-----|--------------------|-------------|
| A | 2 | |
| B | 3 | |
| C | 1 | |
| D | 3 | |
| E | 9/16 | |
| F | 7/8 | |
| G | 2 3/8 | |
| H | 1 | |
| I | 1/4 | Weld |
| | | |
| | | |
| | | |
| | | |
| | | |
| | | |
| | | |
| | | |

Note:
Useable to connect adjustable heads to piles

| | | |
|-----|-----------------|------------|
| 3 | | |
| 2 | | |
| 1 | INITIAL RELEASE | 2023-03-30 |
| REV | MODIFICATION | DATE |

REVISION



TITLE: Adjustable Hex Piles Base 1 7/8"

| | |
|-----------------|-------------------------------|
| SEAL: | DWG. NO : GTBASE178 |
| | DRAWN BY: R.E |
| | DESIGN BY: GOLIATHTECH |
| | CHECK BY: CPOC |
| | APP BY: CPOC |
| OTHER NO : - | |

| | | | |
|------------|---------|-------------------|---------------|
| FORMAT : A | REV.: 1 | DATE : 2023-03-30 | PAGE : 1 DE 1 |
|------------|---------|-------------------|---------------|

THIS DOCUMENT CONTAINS PROPRIETARY INFORMATION AND MAY NOT BE REPRODUCED OR COPIED WITHOUT THE EXPRESS WRITTEN PERMISSION OF A DULY AUTHORIZED REPRESENTATIVE OF GOLIATHTECH INC.

2

1

A

A