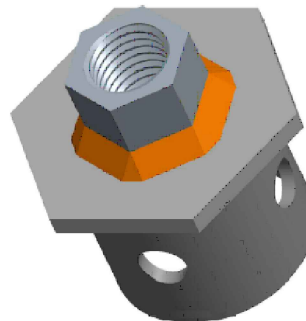
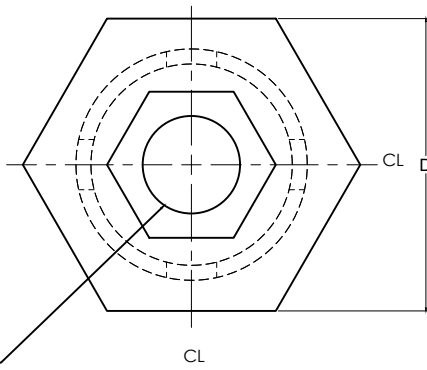
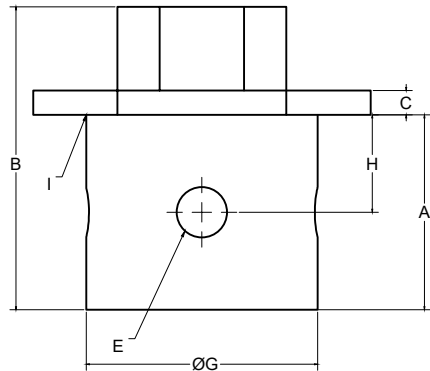


2

1



NOTES :

- 1-MATERIALS:
-PLATE PER CSA G40.21 50W, MIN.FY=60 KSI, FU=70KSI
-TUBES PER ASTM A500 GR C, FY=60KSI, ULTIMATE STRENGTH 70 KSI
- 2-ANY CHANGE OF MATERIAL IS SUBJECT TO GOLIATHTECH APPROVAL
- 3-WELD PERFORMED BY SHOP QUALIFIED CSA STANDARD W47.1 AND W55.3 IN ACCORDANCE WITH GOLIATHTECH WELDING PROCEDURES. WELDING PER CSAW47.1 AND W55.3.
- 4-HOT-DIP GALVANIZED, PARTS PER ASTM A123.
- 5- OVERTAP PER ASTM A563.

B

B

3		
2		
1	INITIAL RELEASE	2023-04-27
REV	MODIFICATION	DATE

REVISION



TITLE: Adjustable Hex Piles Base 2 3/8 with Nut

SEAL:

DWG. NO :
GT-BASE238-NUT

DRAWN BY:
R.E

DESIGN BY:
GOLIATHTECH

CHECK BY:
CPOC

APP BY:
CPOC

OTHER NO :
-

FORMAT : A	REV.: 1	DATE : 2023-04-27	PAGE : 1 DE 1
------------	---------	-------------------	---------------

THIS DOCUMENT CONTAINS PROPRIETARY INFORMATION AND MAY NOT BE REPRODUCED OR COPIED WITHOUT THE EXPRESS WRITTEN PERMISSION OF A DULY AUTHORIZED REPRESENTATIVE OF GOLIATHTECH INC.

Note:
Useable to connect adjustable heads to piles

NO.	Dimension (inches)	Description
A	2	
B	3 1/4	
C	1/4	
D	3 1/2	
E	9/16	
F	1 1/8	
G	2 7/8	
H	1	
I	1/4	Weld

A

A

2

1