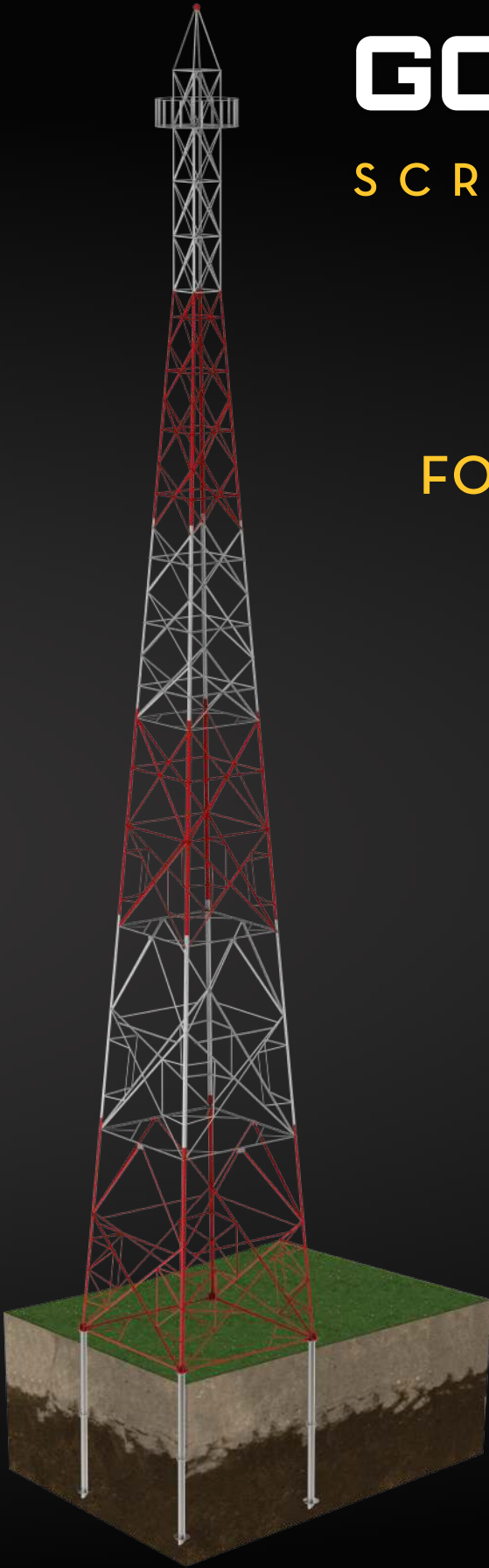


CELL PHONE TOWER

EXCLUSIVE ANCHORING SOLUTIONS



GOLIATH **TECH**

SCREW PILE SYSTEM

HELICAL PILE SUPPORT SYSTEM FOR CELL PHONE TOWER

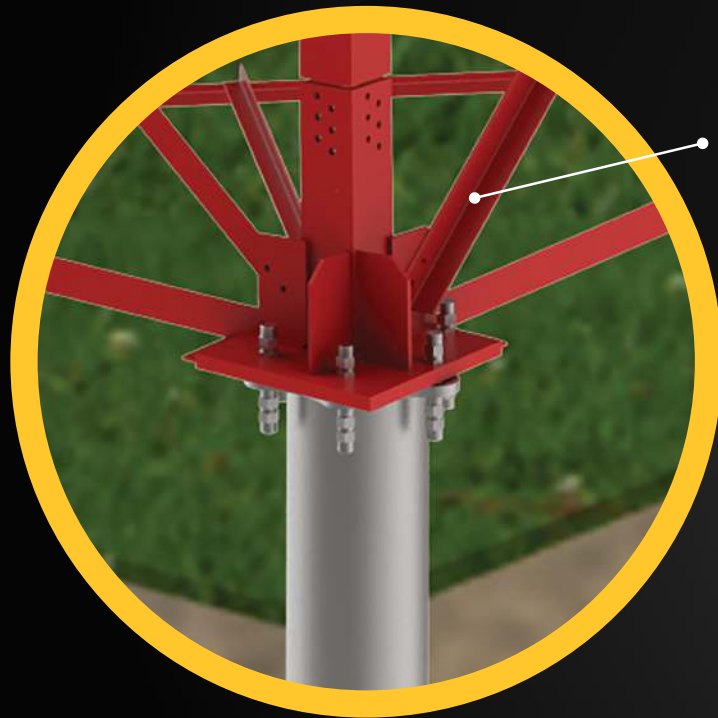
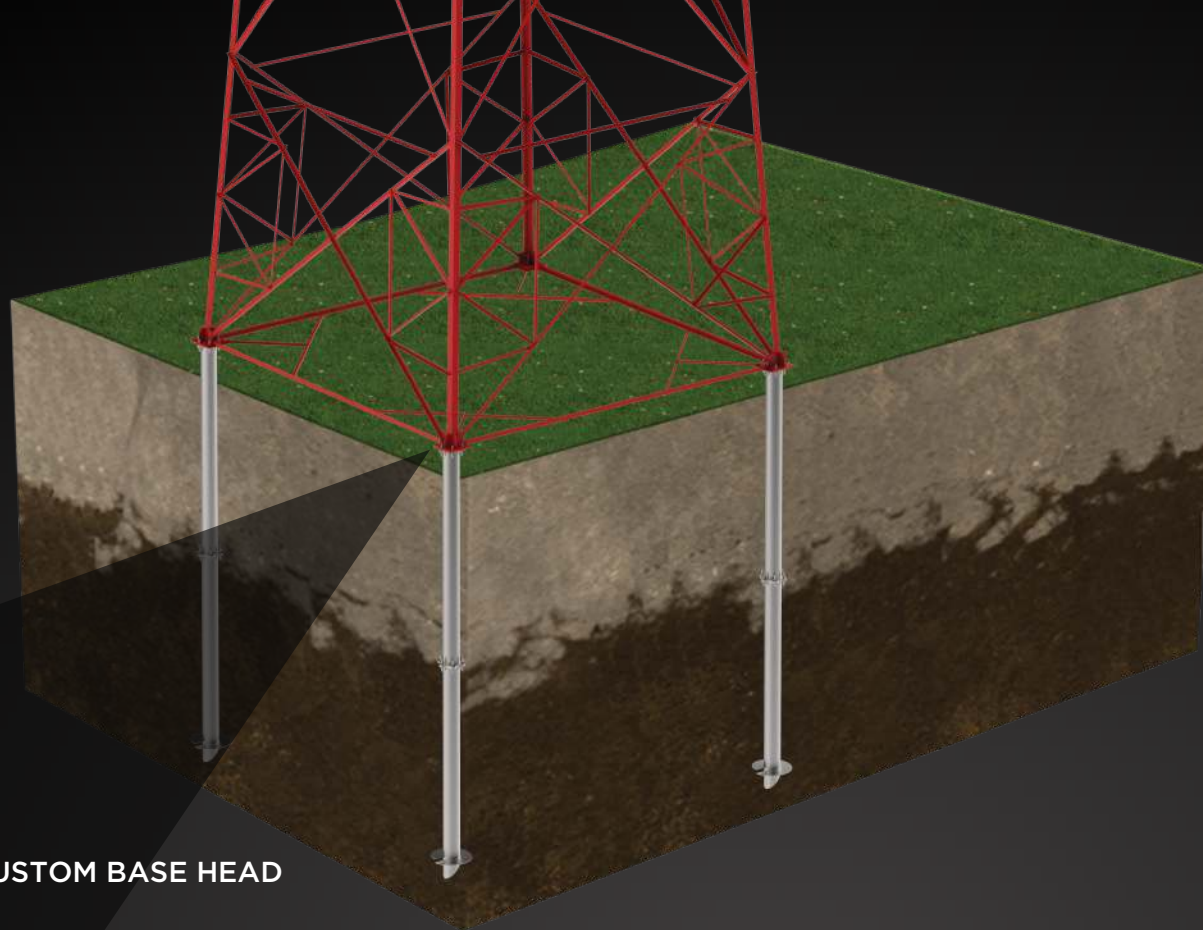
ISO 9001:2015 CERTIFIED | ISO 14001:2015 ENVIRONMENTAL CERTIFIED | ICC-ES ESR-3726
AWS D1.1 / CWB CERTIFIED | CCMC CERTIFIED #13675-R | ACQ & CA COMPLIANT

SOLID, LONG-LASTING CELL PHONE TOWERS

The traditional method of supporting cell phone towers with poured concrete pilings is outdated. Helical piles are a better — and easier — solution.

GoliathTech screw piles ensure cell phone towers' stability in the long term. They are also much quicker to install, and construction can begin immediately afterwards. Plus, they are installed using small equipment that does not damage the surrounding land.

No damage from cold or frost, and no movement!



CUSTOM BASE HEAD

SOLID ANCHORING PREVENTS MOVEMENT

Our screw piles are installed deep inside stable soil to effectively support the cell phone tower — including heavy loads — and in any soil or environmental condition.

They feature helices with a diameter from 9" to 29" (as required) for optimal compression and tension performance. Our precise engineering and installation methods ensure that over time, the tower will remain stable.

QUALITY ENGINEERING

- 1 CUSTOM PILE CAP FOR BASE CONNECTION
- 2 MAKE THE CONNECTION! STRONG & SECURE BOLTED HEAD CONNECTION
- 3 EXTENSIONS HELP REACH STABLE SOIL
- 4 60 KSI GALVANIZED STEEL RESISTS CORROSION

COMPRESSION & TENSION HANDLING

- Industry-leading rod and pile compression resistance
- Extension and mounting bolts feature high shear capacity
- Superior load-bearing capacity
- High tension handling of rods and tubes to prevent uplift

DURABILITY & ENVIRONMENTAL RESISTANCE

- Performance in cohesive & cohesionless soil
- Fights frost and thawing soil movements from the inside out
- Polyurethane core prevents freezing ground around helix
- Prevents tower from moving laterally or vertically



Polyurethane prevents freezing ground around helix and stops winter heaving

60 ksi galvanized steel (larger diameter piles 55 ksi)

Helix size: 9- to 29-inch diameter and 3-inch pitch

INSTALLATION IN HOURS USING SMALL EQUIPMENT

- ✓ NO CONCRETE DELAYS OR DRY TIME
- ✓ REMOVABLE AND REUSABLE
- ✓ NO BLOCKS OR STRAPPING NECESSARY
- ✓ NO MESS
- ✓ NO SOIL DISPLACEMENT OR REMOVAL
- ✓ NO WEATHER DELAYS
- ✓ FULLY ENGINEERED

WE ARE GOLIATHTECH

THE PILLARS OF YOUR PROJECTS

GOLIATHTECH'S INSTALLATION PROMISE

Our network of certified installers put their vast experience to work to guarantee optimal anchoring of each pile.

Because the quality of an installation is as important as the quality of the piles, all GoliathTech installers have received training at our factory and are certified technicians on the installation of our products.

Installers use mini excavators equipped with our proprietary calibrated torque-reading equipment, which allows them to determine the exact tension and compression values on each site. Their expertise ensures that the screw piles and the supported structure are built to last.

**BACKED BY THE GOLIATHTECH
PROMISE, GUARANTEED!**

QUITE SIMPLY SUPERIOR.

For more information on our products
or to find a certified GoliathTech
installer, please contact us:

TOLL FREE: 1.855.743.4777
INFO@GOLIATHTECHPILES.COM

WWW.GOLIATHTECHPILES.COM



CCMC

ACQ

CA