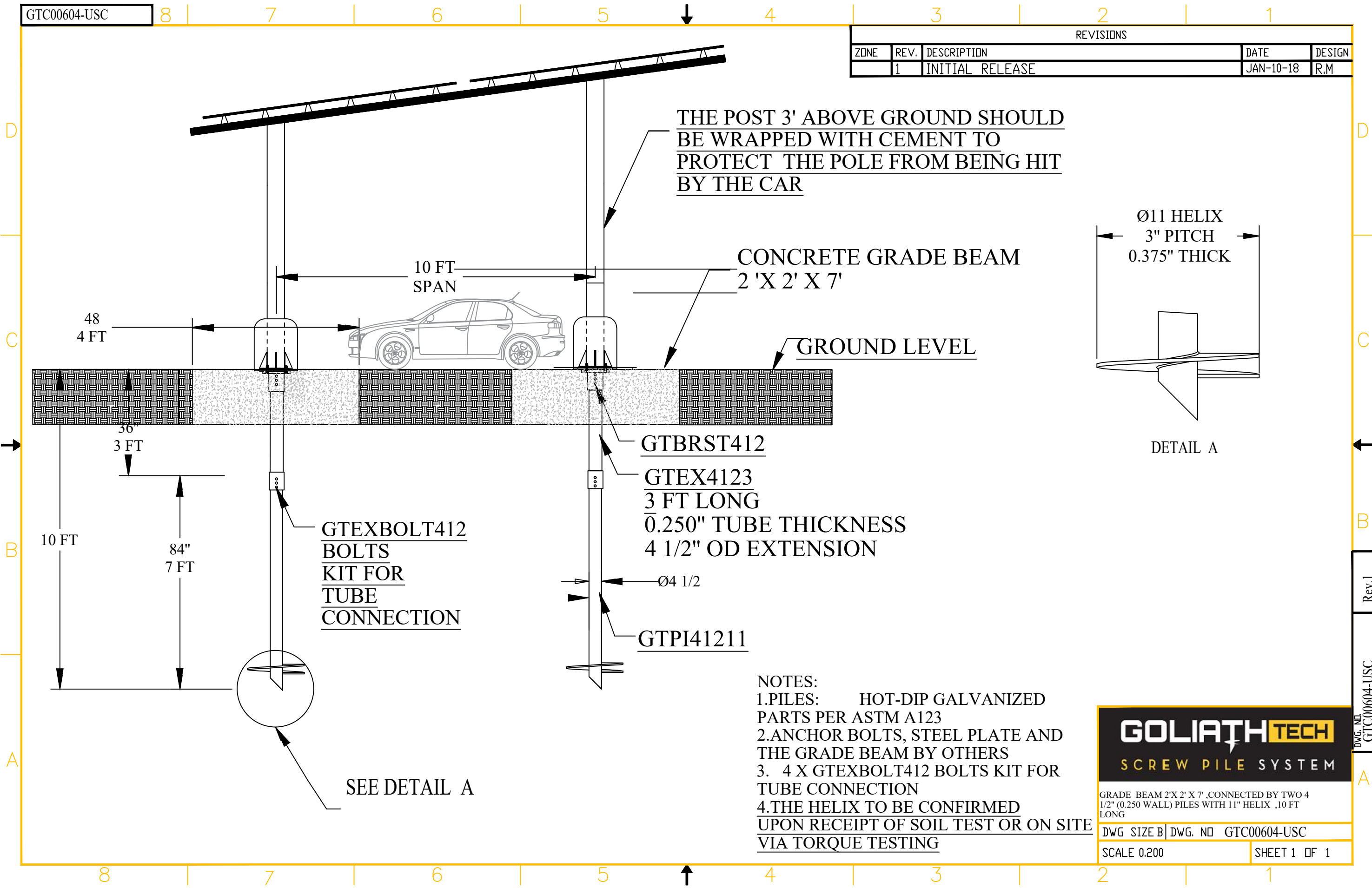


GTC00604-USC

REVISIONS				
ZONE	REV.	DESCRIPTION	DATE	DESIGN
	1	INITIAL RELEASE	JAN-10-18	R.M

THE POST 3' ABOVE GROUND SHOULD BE WRAPPED WITH CEMENT TO PROTECT THE POLE FROM BEING HIT BY THE CAR



- NOTES:
1. PILES: HOT-DIP GALVANIZED PARTS PER ASTM A123
  2. ANCHOR BOLTS, STEEL PLATE AND THE GRADE BEAM BY OTHERS
  3. 4 X GTEXBOLT412 BOLTS KIT FOR TUBE CONNECTION
  4. THE HELIX TO BE CONFIRMED UPON RECEIPT OF SOIL TEST OR ON SITE VIA TORQUE TESTING

**GOLIATH TECH**  
SCREW PILE SYSTEM

GRADE BEAM 2' X 2' X 7', CONNECTED BY TWO 4 1/2" (0.250 WALL) PILES WITH 11" HELIX, 10 FT LONG

DWG. SIZE B | DWG. NO. GTC00604-USC

SCALE 0.200 | SHEET 1 OF 1

DWG. NO. GTC00604-USC Rev.1