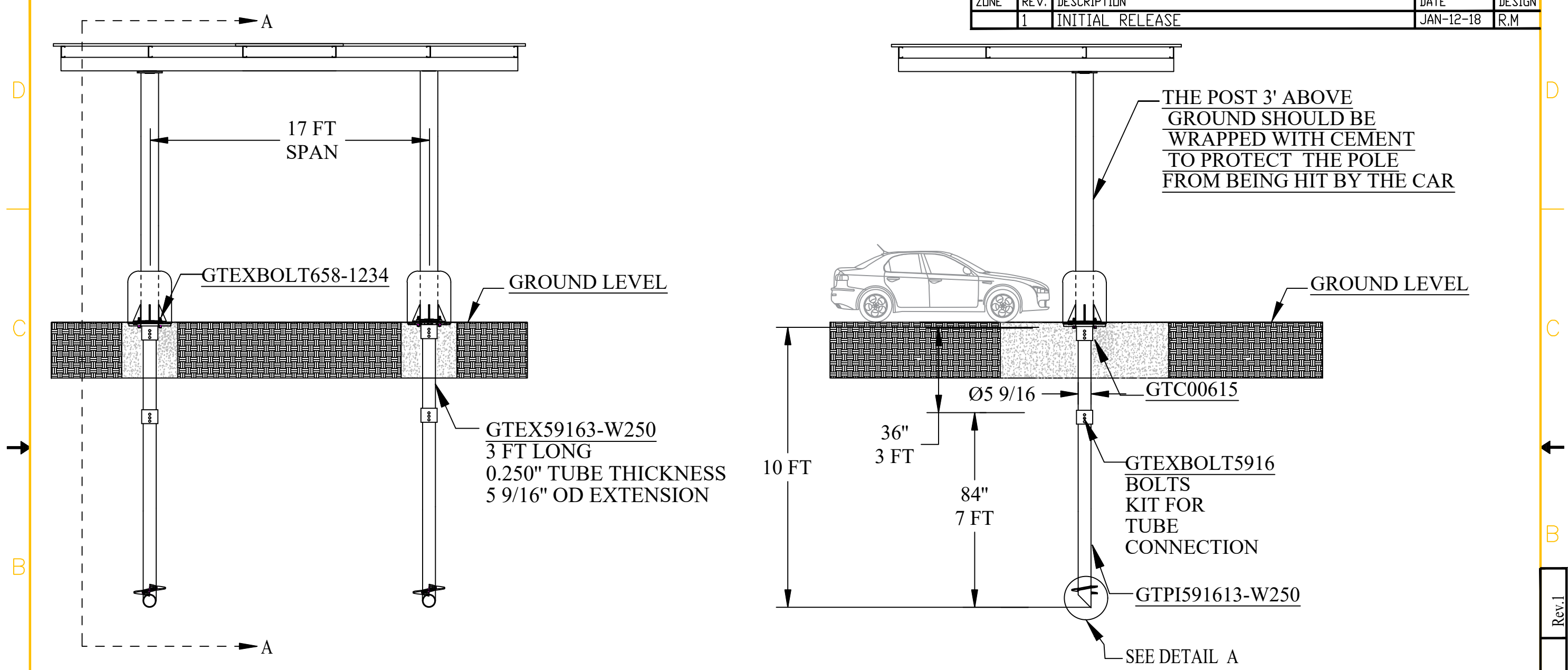


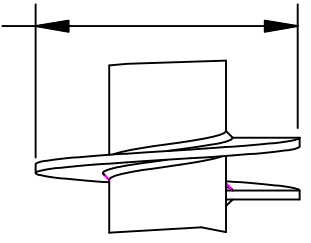
GTC00607-USC

REVISIONS				
ZONE	REV.	DESCRIPTION	DATE	DESIGN
	1	INITIAL RELEASE	JAN-12-18	R.M



THE POST 3' ABOVE GROUND SHOULD BE WRAPPED WITH CEMENT TO PROTECT THE POLE FROM BEING HIT BY THE CAR

Ø13 HELIX
3" PITCH
0.375" THICK



DETAIL A

- NOTES:
1. PILES: HOT-DIP GALVANIZED PARTS PER ASTM A153
 2. ANCHOR BOLTS, STEEL PLATE AND THE GRADE BEAM BY OTHERS
 3. 4 X GTEXBOLT5916 BOLTS KIT FOR TUBE CONNECTION
 4. 2 X GTEXBOLT658-1234 BOLTS KIT FOR HEAD CONNECTION
 5. THE HELIX TO BE CONFIRMED UPON RECEIPT OF SOIL TEST OR ON SITE VIA TORQUE TESTING

SECTION A-A

GOLIATH TECH
SCREW PILE SYSTEM

SUNSHADE SHOP DRAWING FOR 5 9/16" (0.250" WALL) PILES WITH 13" HELIX ,10 FT LONG

DWG. SIZE B | DWG. NO. GTC00607-USC

SCALE 0.200 | SHEET 1 OF 1

DWG. NO. GTC00607-USC Rev.1